

'U' Bolts

Not recommended as expansion joint guides but may be used on small low pressure screwed pipework to 40 mm nominal bore. Must not be used as expansion joint guides on 50 mm nominal bore flanged pipework and above

SADDLE GUIDE for Copper Pipe IH 142

SADDLE GUIDE for Steel Pipe IH 103

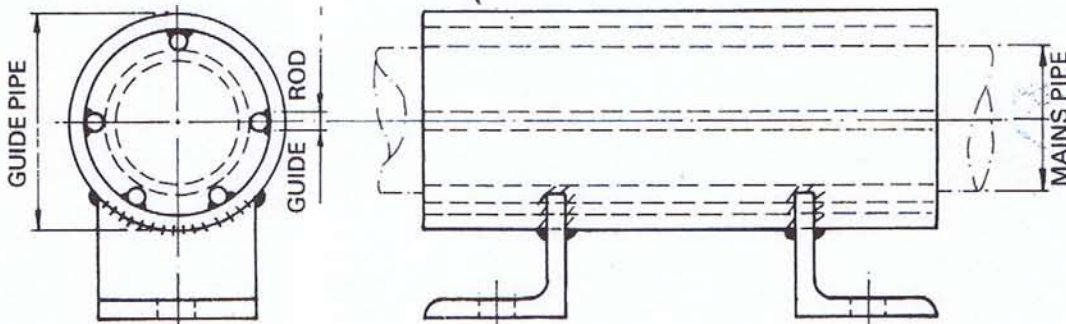
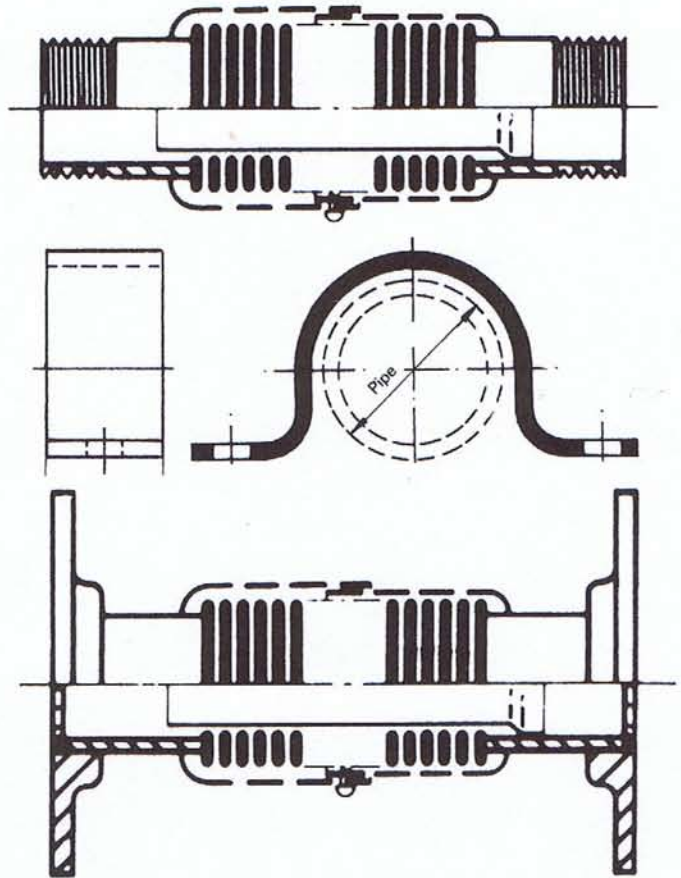
Suitable for small pipe guides up to 40 mm nominal bore and low pressure applications. They are not recommended for main guides beyond this size at all. They may be used on larger sizes only when a 'ganged' bank of intermediate guides are provided. 'Ganged' banks of intermediate guides must not be supported by drop rods

Polypropylene strip is used to isolate the copper pipe from any supporting steel structure. Please specify if required.

TUBULAR PIPE SLIDE GUIDE IH 187

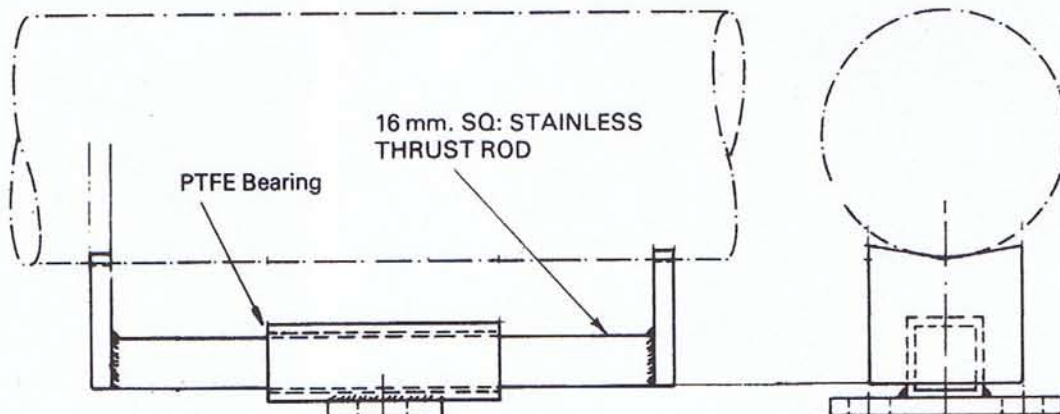
For steel and copper pipes sizes 15 mm to 150 mm LPHW, MPHw, HPHW, STEAM AND CONDENSATE, SECONDARY AND PRIMARY HWS. Tube guides are particularly suitable in vertical service risers where space is of prime importance in high rise buildings. The installer must slide the guide over the pipe before welding on flanges. Mounting feet can be turned through 90° for fixing to a single channel or alternatively, flat plates for bolting to channel face.

Guide rods in steel for steel pipework, or copper or brass, brazed in position for non-ferrous pipework. On pipes of 40 mm and below, a single guide may be used adjacent to the bellow due to a standard guide length of 300 mm.



PIPE SLIDE GUIDE IH 184

(Suitable for pipes up to 80mm)



MULTI-SERVICE APPLICATIONS FOR WELDING DIRECT TO THE PIPEWORK. CAN ALSO BE FITTED WITH IH 100 PIPE CLIPS FOR BOLTING TO THE PIPEWORK.