



## MagVent location

This unit must be installed at the hottest part of the system. In a heating system this is the main flow from the boilers. The static head must not exceed 30 metres.

In a chilled water system the unit must be located in the return close to the chiller. Maximum static head must not exceed 15 metres.

N.B. If the static head is greater than these figures the efficiency of the MagVent is reduced.

The maximum flow rates through the MagVent is 3m/sec. If these values are exceeded the efficiency is reduced.

## Commissioning

The MagVent requires no special commissioning. All units are fitted with a fast bleed valve, which should be used when initially filling the system. The same valve is used for draining off floating "scum" and also prevents the possibility of dirt clogging the air vent.

Maintenance will be required to remove trapped dirt and sludge. Opening the ball valve at the bottom of the unit does this. The valve may be opened while the system is under pressure.

## Maintenance -Removing & cleaning the Magnetic rod

Isolating valves should be installed either side of the connecting flanges on the unit. Close the two isolating valves. Secondly open the ball valve located on the bottom of the unit or the fast bleed valve. Care should be taken as the water may be very hot. Then remove the bolts located on the single front blank flange. Then remove the blank flange with the magnetite attached. Extreme care should be taken at this point as the magnetite is very powerful. Remove all attached debris on the magnetite. Once the magnetite is clean and free from debris please re-insert into the main body of the unit. Tighten all bolts on the flange; close all valves on the unit. Open the two isolating valves (slowly) and check for leaks (around the gasket on the blank flange).

Scalding is a danger at high pressures and temperatures. Ensure that the water is safely piped to drain before opening the valve.

The system pressure will flush the dirt out. Leave the valve open until the collected dirt has been flushed out, repeat this operation every few days. Once the water is clear it may be possible to drain every 6 months or so depending on the size and age of the system.

When cleaning the MagVent's internal magnetite please be aware that only small amounts of magnetite might be collected on the magnetite if regular flushing of the dirt separator is taking place. All the larger sizes of magnetite will be collected in the bottom of the dirt separator as normal. It is still very important to flush the dirt separator as part of the standard maintenance programme through the valve on the bottom of the unit. Doing this will prevent the magnetite from clogging quickly and reducing its effectiveness, and therefore the actual magnetite will not have to be removed and cleaned as often (less costs).

Most of the dissolved air will be removed in a few days. However this may vary from system to system. In large systems it may take several weeks.

Dirt separators can only remove dirt that is circulating.

## Flanges

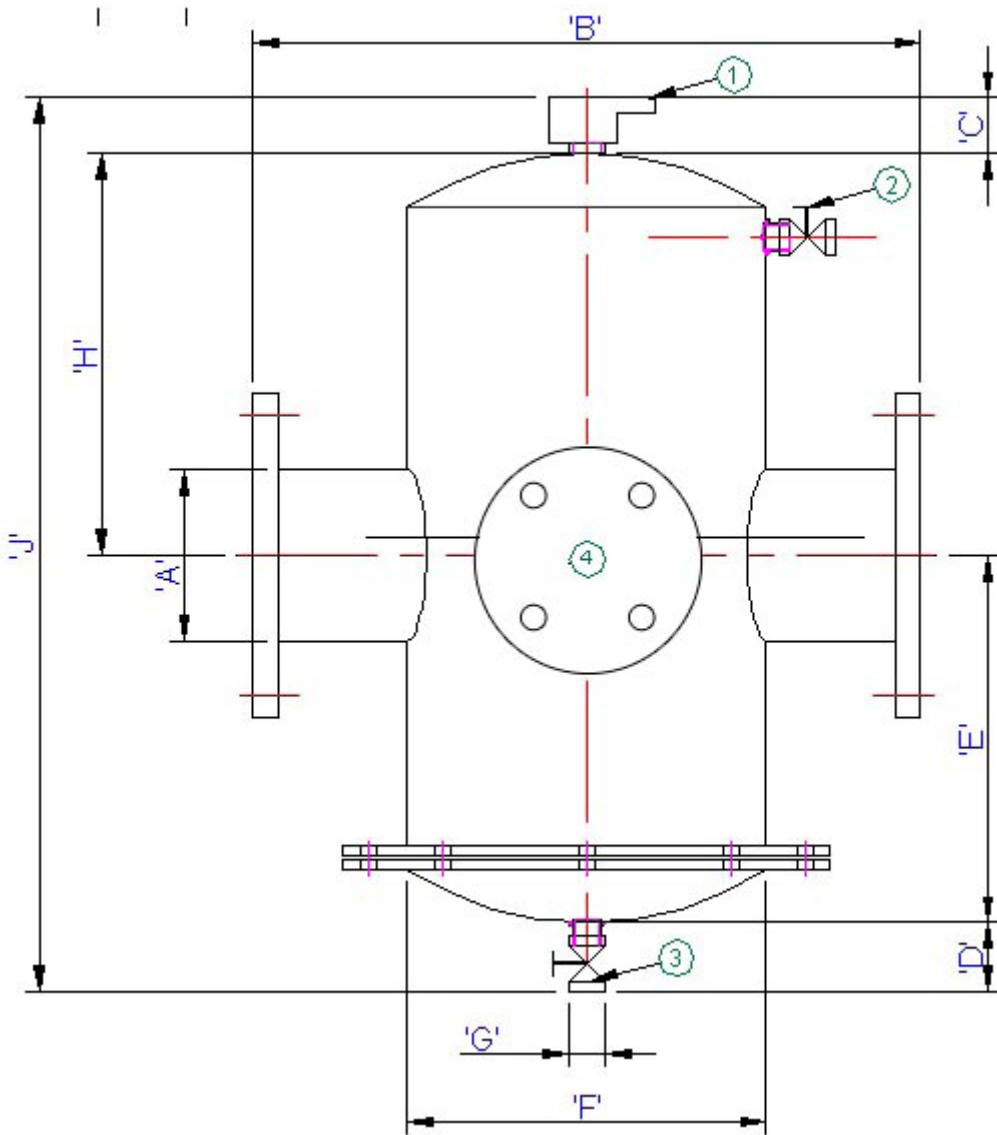
All flanges are drilled to BS 4504 PN16 as standard. Plain ends and other flange ratings are available on request.

## Drain valve

All models are supplied with a ball valve for draining the collected dirt and sludge.



MAGVent Combined unit Air (de-aerator)-& Dirt Separator-Demountable - Model MAGCVAD-R



- (1) High Capacity Auto Air Vent
- (2) Fast Bleed Valve
- (3) Drain Valve
- (4) Removable High-Gauss Magnetic Rod

All Dimensions ± 10mm

Product Code	DIMENSION'S									Max WRK Press	Test Press
	A	B	C	D	E	F	G	H	J		
MAGCVAD-R50	2"	350	150	130	220	170	25	170	670	10 Bar	21 Bar
MAGCVAD-R65	2½"	350	150	130	220	170	25	170	670	10 Bar	21 Bar
MAGCVAD-R80	3"	460	150	130	260	220	25	265	805	10 Bar	21 Bar
MAGCVAD-R100	4"	460	150	130	260	220	25	265	805	10 Bar	21 Bar
MAGCVAD-R125	5"	630	150	130	400	325	25	375	1055	10 Bar	21 Bar
MAGCVAD-R150	6"	630	150	130	400	325	25	375	1055	10 Bar	21 Bar
MAGCVAD-R200	8"	810	150	200	490	410	50	400	1240	10 Bar	21 Bar
MAGCVAD-R250	10"	880	150	200	490	510	50	640	1480	10 Bar	21 Bar
MAGCVAD-R300	12"	1100	150	200	675	610	50	900	1925	10 Bar	21 Bar
MAGCVAD-R350	14"	1100	150	200	675	770	50	900	1925	10 Bar	21 Bar
MAGCVAD-R400	16"	1250	150	200	825	770	50	1000	2175	10 Bar	21 Bar
MAGCVAD-R450	18"	1250	150	200	825	920	50	1000	2175	10 Bar	21 Bar



